



# TARRANT COUNTY TXGENWEB

Barbara Knox and Rob Yoder, County Coordinators

Copyright © 2008-2009. All rights reserved.

## Civil War Veterans of Northeast Tarrant County

### Samuel Deviney Coble

Compiled by Michael Patterson  
Copyright 2008-2009. All rights reserved.

Samuel Deviney Coble was a Confederate veteran who spent the last years of his life at Grapevine. He was the brother of another Grapevine veteran of the Southern Army, Allen B. Coble.

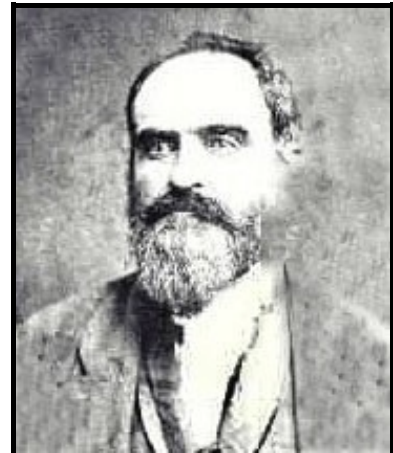
Samuel D. Coble was born in Bedford County, Tennessee on March 4, 1830. He was a son of Jacob Coble (1791-1840) and his wife, Mary "Polly" Kimbrough (1805-1888). Later in life, members of his extended family called him "Uncle Win."

Samuel's widowed mother, Mary Coble, and her children appear in the 1840 census of Bedford County, Tennessee. In that year, she owned one female slave aged ten to twenty-four.

Samuel appears in the 1850 census of Bedford County, Tennessee's District 25. He is in a blended family headed by his step-father, Richard J. Williams, his [Samuel's] mother, his Coble siblings, a Williams step-brother, and a Williams half-brother.

Samuel served the Confederacy in Co. H, 30<sup>th</sup> Regiment, Texas Cavalry (Gurley's) (1st Texas Partisan Rangers). He was thirty-two years old upon his enlistment at Camp McCulloch, Texas on July 28, 1862. He brought a \$150 horse and equipment worth \$20. He later served in Co. A, 3<sup>rd</sup> Kentucky Cavalry, commanded by another Grapevine citizen, Richard M. Gano. Samuel has a bronze grave marker from the veterans administration commemorating his service in the 3<sup>rd</sup> Kentucky Cavalry.

Samuel D. Coble was never married. He died at Grapevine on October 15, 1890. He was a member of the Masonic Lodge at Grapevine. His headstone in Grapevine Cemetery bears a Masonic emblem.



The Texas Historical Marker in Grapevine Cemetery has an inscription which mentions Samuel D. Coble: *“Grapevine Cemetery. Samuel D. Coble (130-1890) joined later by his brother Allen B. Coble (1836-1906), settled here in the 1850’s. In 1878 they sold 4.5 acres of land at this site for use as a public cemetery. The oldest known grave is that of Louisa C. Guiry (d. 1860), who died at the age of 22. Many pioneer settlers of the area are buried here, including Barton H. Starr (1850-1912), elected the first mayor of Grapevine in 1907, and James Tracy Morehead (1809-1879), who served as the second Judge of Tarrant County. Additional land south of the original tract was acquired in 1925.”*



Samuel D. Coble headstone at Grapevine

