



TARRANT COUNTY TXGENWEB

Barbara Knox and Rob Yoder, County Coordinators

Copyright © 2008-2012. All rights reserved.

Civil War Veterans of Northeast Tarrant County

Louis B. Blevins

Compiled by Michael Patterson
Copyright 2008-2012. All rights reserved.

Louis B. Blevins was a Confederate veteran who lived the last years of his life near Keller. He lies buried in Bourland Cemetery.

Louis Blevins was born in DeKalb County, Alabama on January 20, 1843. He was a son of Tarrant County pioneer Jonathan Blevins (1817-1911) and his wife, Emily (Maxwell) Blevins (1820-1878).

When the 1850 census was taken, Louis was living with his parents and siblings in District 24 of DeKalb County, Alabama. His oldest sibling, Nancy, born about 1839, had been born in Tennessee, but all the rest of the children were natives of Alabama.

By the time the 1860 census taker arrived, Jonathan Blevins had moved the family to Militia District 1129 in Dade County, Georgia. The birthplaces of Jonathan's children suggest he must have made the move about 1859.

Louis served the Confederacy as a private in Co. H, 21st Georgia Infantry. His original records in the National Archives say he enlisted July 10, 1861 (other records say July 21) at Rising Fawn, Dade County, Georgia, for the duration of the War. On a roll dated November 1861 he is shown temporarily absent, "sick at Sudley Church." On a roll for December 31, 1863 through June 30, 1864, he was shown serving extra duty driving the brigade's forage wagon, and was still performing that duty as late as August 1864. He was surrendered at Appomattox Court House in Virginia on April 9, 1865.

Other records say he was wounded in the leg at the Second Battle of Manassas, Virginia, necessitating amputation on August 26, 1862. This could explain his extended duty working as a wagon driver. He was captured, exchanged October 7, 1862, and sent home.

Louis was first married in Dade County, Georgia on June 17, 1866 to Evaline Forester. At the time of the 1870 census, Louis was still living in Militia District 1129 of Dade County. With him were his wife, Evaline (born about 1841 in Georgia); a son William Blevins (born about 1867); and a son Marion J. Blevins (born in 1869).

By the time of the 1880 census, Louis Blevins and his family had arrived in Texas and had settled in Precinct 4 of Tarrant County. With him in that year were his wife, Mary A. Blevins (born about 1838 in Alabama); and his children: William Blevins (born about 1867); Joseph? Blevins (born about 1869); Mary Blevins (born about 1871); Jennie? Blevins (born about 1874 in Georgia); Johnathan Blevins (born about 1877 in Texas); and Albert Blevins (born in May 1880 in Texas).

Blevins's home appears on the 1895 Sam Street Map of Tarrant County. In modern-day terms, it sat in Keller south of Rapp Road, and within the area defined by Rapp Road on the north, Willis Drive on the west, Doyle Drive on the South, and Chase Oaks Drive on the east.

Louis Blevins was living at Keller as a widower with children when the 1900 census was taken. With him were his daughter Janne Blevins (born in April 1875); Johnathan Blevins (born in September 1877); and Annie Blevins (born in May 1884).

Blevins's wife, Mary L. Blevins, was born February 4, 1838. She died December 3, 1898, and was buried in Bourland Cemetery in Keller. She may have been his second wife, since the 1870 census shows his wife's name as Evaline. In 1901, Mr. Blevins was remarried to a widow, Mrs. Sarah A. (Thomas) Sansom.

A short note about the marriage appeared in the Grapevine Sun on August 17, 1901: "*Mr. L. B. Blevins and Mrs. Sarah Sansom were married at Smithfield Sunday evening.*" This writer remembers seeing an excellent photo of Sarah Blevins in an undated newspaper clipping, possibly from the Fort Worth newspaper in the 1940's. It mentioned that many community members knew her as Grandma Sansom, but that her present married name was Blevins. The photograph was made during a Smithfield Reunion.

Mr. Blevins was a member of the Robert E. Lee Camp of United Confederate Veterans in Fort Worth. Louis Blevins died on January 4, 1921, and was buried beside his first wife in Bourland Cemetery. Mr. Blevins's death certificate says he died at Keller of chronic prostatitis, rectal troubles, and other senile problems. He funeral arrangements were made by the Foust family in Grapevine. The informant for the death certificate was William Satterwhite of Keller.

An obituary for Mr. Blevins appeared in the Fort Worth Record on January 6, 1921: "*LEWIS B. BLEVINS DIES AT KELLER. Funeral for Lewis B. Blevins, 77, Confederate veteran and pioneer resident of Tarrant county, who died Tuesday at his home near Keller, was held at Keller at 3 o'clock Wednesday afternoon. Interment was in the Bourland cemetery at Keller.*"

"Blevins was a native of DeKalb County, Ala. He served four years in the Confederate army during the Civil war. He became a member of the Primitive Baptist church in 1874. In 1875 he was married and with his wife came to Texas, settling in Tarrant county. Since that time he has been

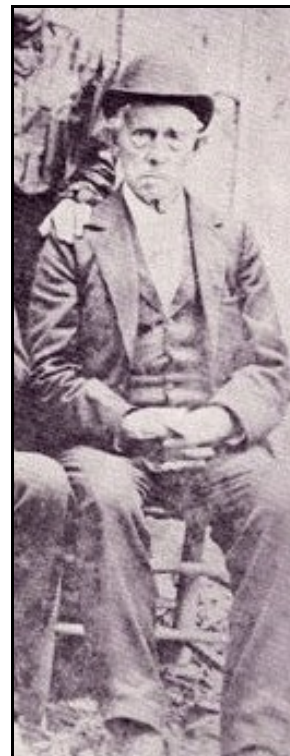
engaged in farming near Keller and was widely known. He is survived by his wife, four sons, and two daughters. They are: William Blevins of DeQueen, Ark., M. J. Blevins of Fort Worth; J. N. Blevins and Mrs. R. A. McCain of Keller; H. A. Blevins of Vernon; and Mrs. Lou Dill of Weatherford."

Louis's widow, Mrs. Sarah A. Blevins of Keller applied for a Confederate pension in 1925. A note on her file says "Dead June 15, 1934," but that probably refers to the date on which the pension board was notified of her death. She said she was the widow of Louis Blevins, who died January 4, 1921 in Tarrant County. They were married August 11, 1901 in Tarrant County. She said she was eighty-three years old, born in Illinois, and had lived in Texas since 1859. She said she had lived at Keller for sixty-six years. Her husband's command was raised in Georgia. He served four years in Co. H, 21st Georgia Infantry. William M. Blevins of Tarrant County, Louis's brother, made an affidavit for him, having served in the same company and regiment as Louis.

Mrs. Sarah Ann Blevins died in Tarrant County on June 13, 1934 at 12:10 p.m. She died of senility. Her death certificate reveals that she was born June 13, 1842 in Montgomery County, Illinois. She died on her ninety-second birthday. She was the daughter of an Illinois native named Mr. Thomas. She was buried on June 14 at Smithfield by J. E. Foust of Grapevine. The informant was Mrs. Tom Fuller of Keller. Her grave is apparently unmarked.



Photo courtesy of Allen Wheatley
<http://teafor2.com>



Jonathan Blevins,
Louis's father



Louis B. Blevins is seated 2nd from the left. His father, Jonathan Blevins, is seated next to him on the end.
Photo taken at Grapevine, Texas.

